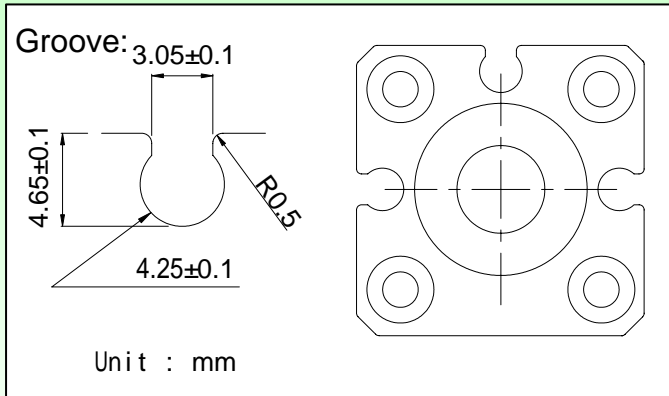


SD-07 Series:



Specification

Type	SD - 07R		SD - 07N		SD - 07P	
Characteristics						
Wiring	2Wire		3 Wire			
Connect Diagram						
Switching logic	Normally open		Solid state output, Normally open			
Output	Reed switch		NPN Sinking		PNP Sourcing	
Lead wire type	Horizontal					
Load voltage	5 ~ 120V DC/AC		5~28V DC			
Load current	100mA Max.		200mA Max.			
Switching rating	10W Max.		6W Max.			
Current consumption	---		20mA Max. @ 24V		18mA Max. @ 24V	
Voltage drop	2.5V Max. @ 40mA DC		0.5V Max. @ 200mA (Resistive load)			
Leakage current	---		0.01mA Max.			
Frequency	200Hz		1000Hz			
Shock	30G		50G			
Vibration	90 m/s ² (9G), Double amplitude 1.5 mm					
Insulation resistant	DC 500V 100M (Lead wire to case)					
Withstand voltage	AC 1000V (50/60Hz) 1 minute (Lead wire to case)					
CE & Protection IP	EN60947-5-2		IEC529		IP67(NEMA 6)	
Indicator	Red LED		Red LED		Green LED	
Cable	2.8 ,2C, Gray PVC		2.8 ,3C, Black PVC			
Temperature range	-10 ~ 70					
Protection circuit	---		Reverse polarity; Surge suppression			
Dimensions						

